

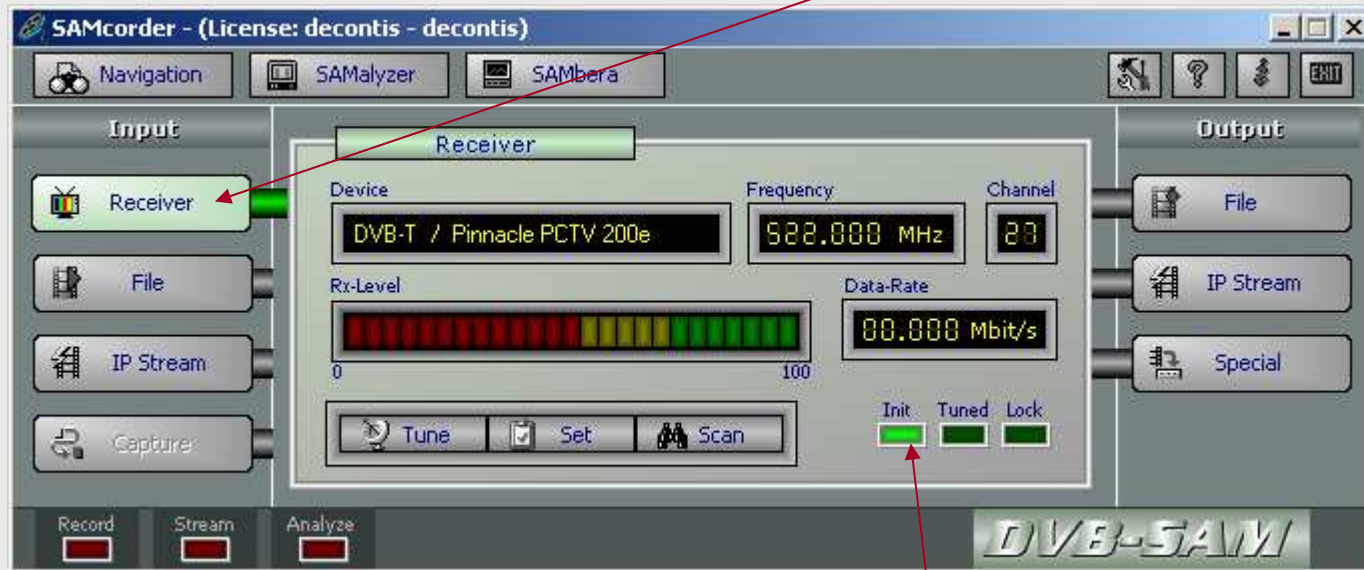
How can I receive DVB-H Services ?



Start the SAMcorder application from the Windows start-menu. The main-window of the SAMcorder application is shown.

1

Click the button 'Receiver' in the tool-bar to open the SAMcorder Receiver tool.



For more information or in case of questions, problems or error messages please read our FAQ site at first

<http://www.decontis.com/faq.htm>

2

Check that the LED 'Init' is on.

dvbSAM

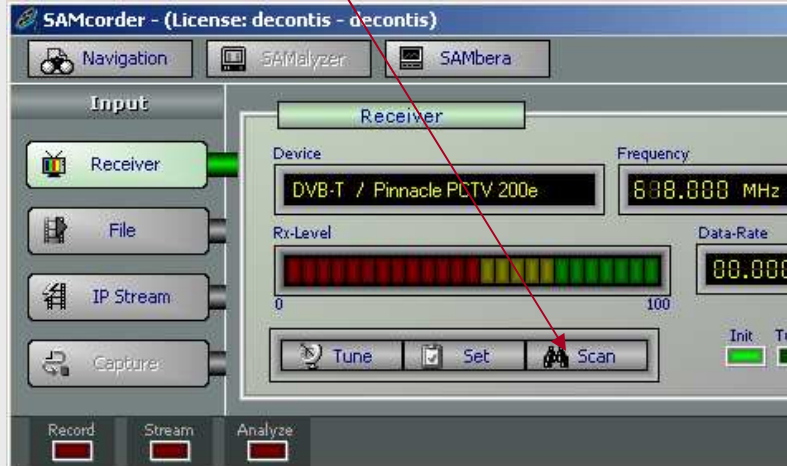
How can I receive DVB-H Services ?



SAMcorder provides a powerful scanning tool to find out DVB-H services automatically.

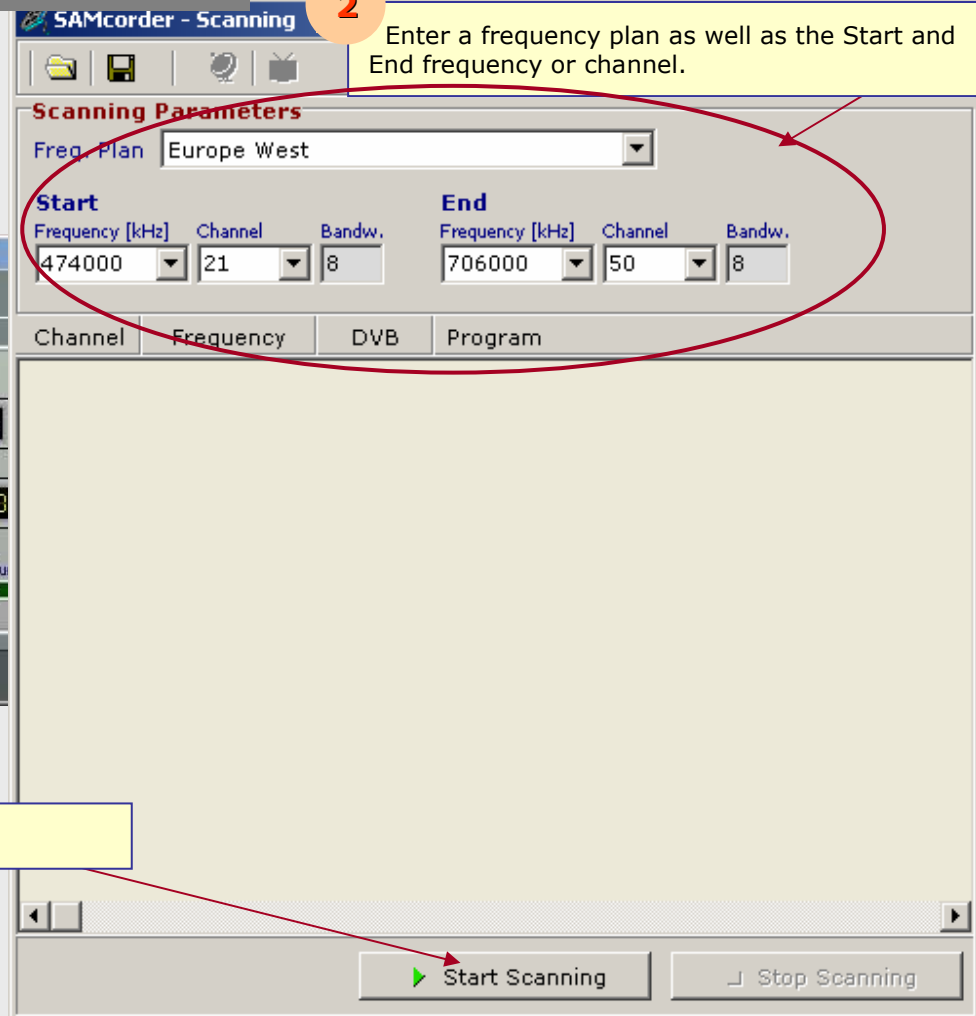
1

Click the button 'Scan' to open the scanning.



2

Enter a frequency plan as well as the Start and End frequency or channel.



3

Click the button 'Start Scanning'

dvbSAM

How can I receive DVB-H Services ?



The Scanning tool provides a list of all DVB-T and DVB-H services which are currently available in the selected frequency area.

2

Click the button 'Tuning+Monitoring'

The screenshot shows the SAMcorder - Scanning window. The 'Scanning Parameters' section is visible, with 'Freq. Plan' set to 'Europe West'. The 'Start' and 'End' frequency ranges are defined by Frequency [kHz], Channel, and Bandw. fields. Below this is a table of detected services.

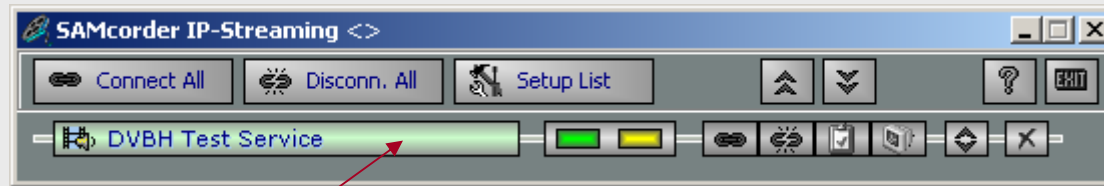
Channel	Frequency	DVB	Program
27	522000	DVB-T	rbb Berlin
27	522000	DVB-T	rbb Brandenburg
27	522000	DVB-T	Phoenix
27	522000	DVB-T	EinsExtra
33	570000	DVB-T	ZDF
33	570000	DVB-T	3sat
33	570000	DVB-T	Doku/KiKa
39	618000	DVB-H	DVBH Test Service [Video+Audio]
39	618000	DVB-H	DVBH Test Service [Video+Audio]
39	618000	DVB-H	DVBH Test Service [Video+Audio]
39	618000	DVB-H	DVBH Test Service [Video+Audio]
39	618000	DVB-H	DVBH Test Service [Video+Audio]
39	618000	DVB-H	ESG - Bootstrap [FLUTE]
39	618000	DVB-H	DVBH Test Service [FLUTE]
39	618000	DVB-H	DVBH Test Service [Video+Audio]

At the bottom of the window, there are two buttons: 'Start Scanning' and 'Stop Scanning'.

1

Select a DVB-H service.

How can I receive DVB-H Services ?



1

The receiver is tuned.

2

An IP streamer is opened automatically.



3

SAMitor is opened automatically and shows the selected DVB-H video service.

